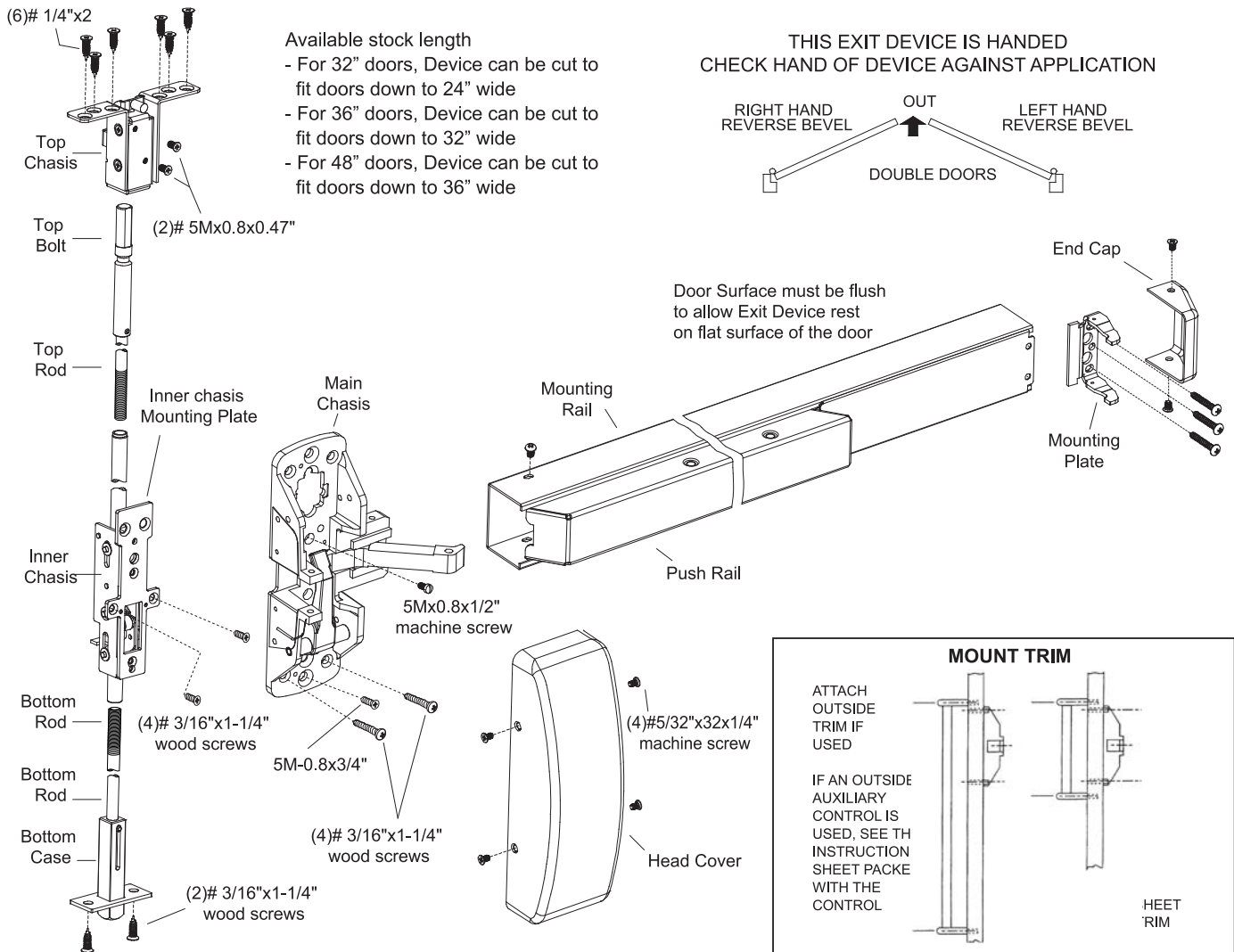
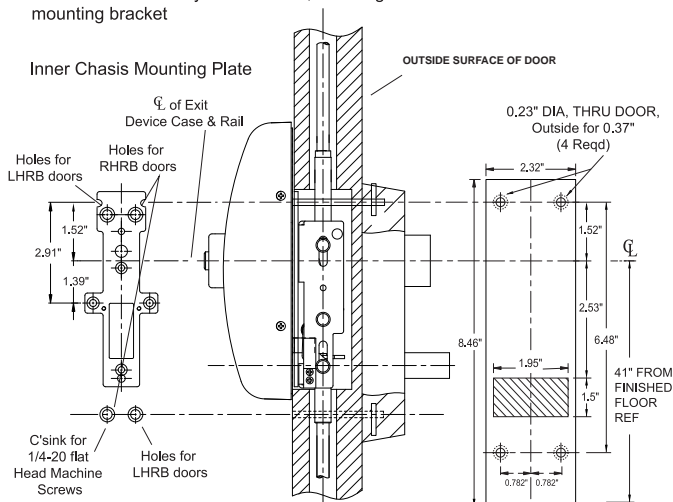


INSTRUCTIONS FOR INSTALLING CAL-ROYAL W98CVR . SERIES CONCEALED VERTICAL ROD EXIT DEVICE



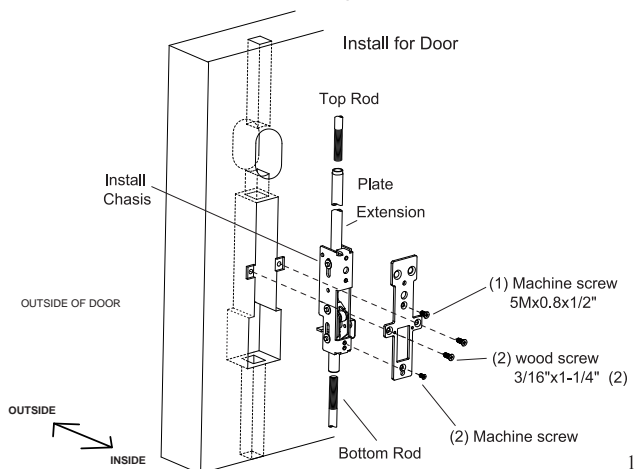
INSTRUCTIONS FOR INSTALLING CAL-ROYAL ESC LEVER TRIM FOR WCVR9800 SERIES CONCEALED VERTICAL ROD EXIT DEVICE

1. Thru Inner Chasis cutout in the door, insert the extension in the door
2. Insert Inner chasis in the cutout, and insert reduced end of extension in top threaded bushing on inner chasis, and fasten the rod extension with 1 machine screw
3. On outside of door thru the cutout, install Plate into extension in the door
4. Before attaching main chasis and inner chasis to the door, attach esc lever trim to the door with (2) 1/4-20 x 2-3/8" flat head machine screws
5. Then attach Rail Ass'y to the chasis, and hinge stile end of rail to the door with mounting bracket



INSTRUCTIONS FOR INSTALLING CAL-ROYAL WOOD DOOR ESC TRIM WCVR9800 SERIES CONCEALED VERTICAL ROD EXIT DEVICE

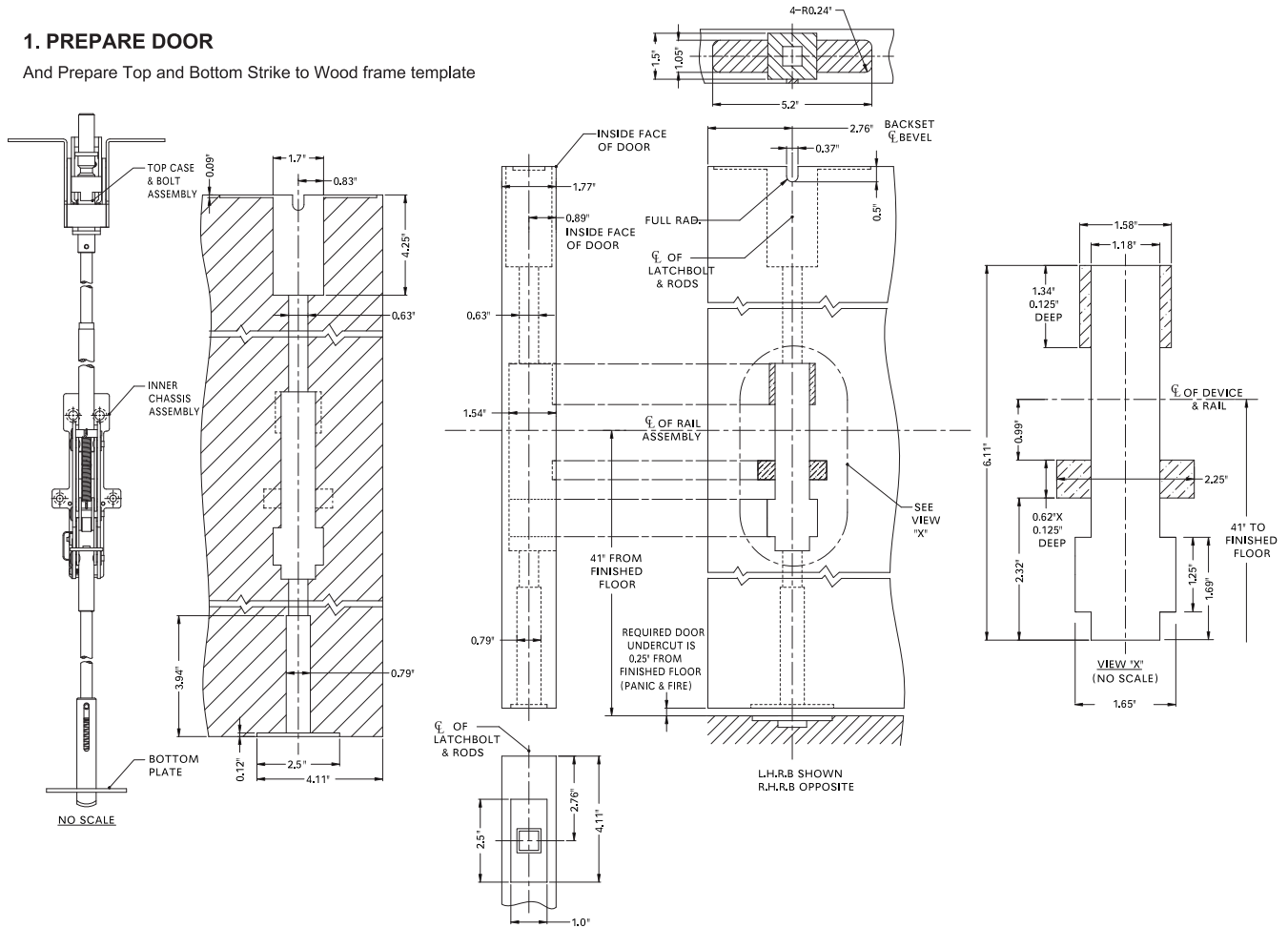
1. Thru Inner Chasis cutout in the door, insert the extension in the door
2. Insert Inner chasis in the cutout, and insert reduced end of extension in top threaded bushing on inner chasis, and fasten the rod extension with 1 machine screw
3. On outside of door thru the cutout, install Plate into extension in the door
4. Attach mounting plate to inner chasis with 2 machine screws, then attach mounting plate to the door with 2 wood screws
5. Attach WD Esc trim to the door. Then attach Rail Ass'y to the chasis, and hinge Stile end of rail to the door with mounting plate.



INSTRUCTIONS FOR INSTALLING CAL-ROYAL W98CVR . SERIES CONCEALED VERTICAL ROD EXIT DEVICE

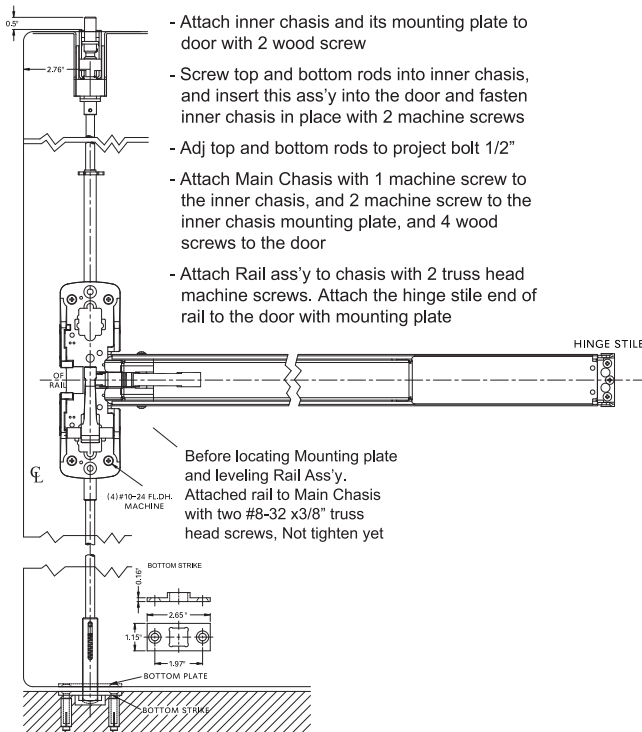
1. PREPARE DOOR

And Prepare Top and Bottom Strike to Wood frame template



2. MOUNT ROD & CHASSIS

Use Strike Furnished

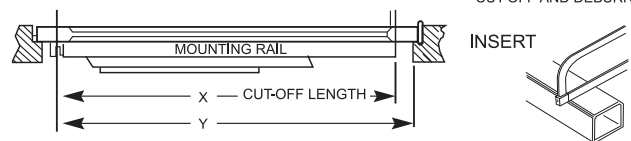


3. MOUNT RAIL ASS'Y

3.1. Determine cut-off dimension "X" by subtracting 1-1/8" from dimension "Y"

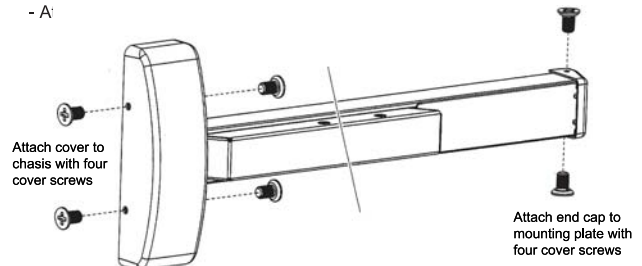
- 3.2. Depress arm into rail opening and slide rail onto chasis
- 3.3. With push rail depressed, adj top bolt flush with top of the door, and bottom bolt flush with bottom
- 3.4. Insert top chasis into cutout at the top of the door, and attach with six wood screws

VERTICAL REFERENCE LINE (CHASSIS) RAIL MUST OVERLAP STILE BY 5/16" MIN MARK CUT-OFF POINT ON MOUNTING RAIL CUT-OFF AND DEBURR



4. ATTACH COVER

- Attach end cap to mounting plate with two cover screws
- A:



5. OPERATION CHECK

- 5.1. Depress Pushrail, bolt should retract into door.
The latch retractor button should pop out and hold the bolt retracted until button is depressed
- 5.2. If button does not pop out, remove top chasis and screw the top rod in one turn. Replace top chasis and repeat abv operation